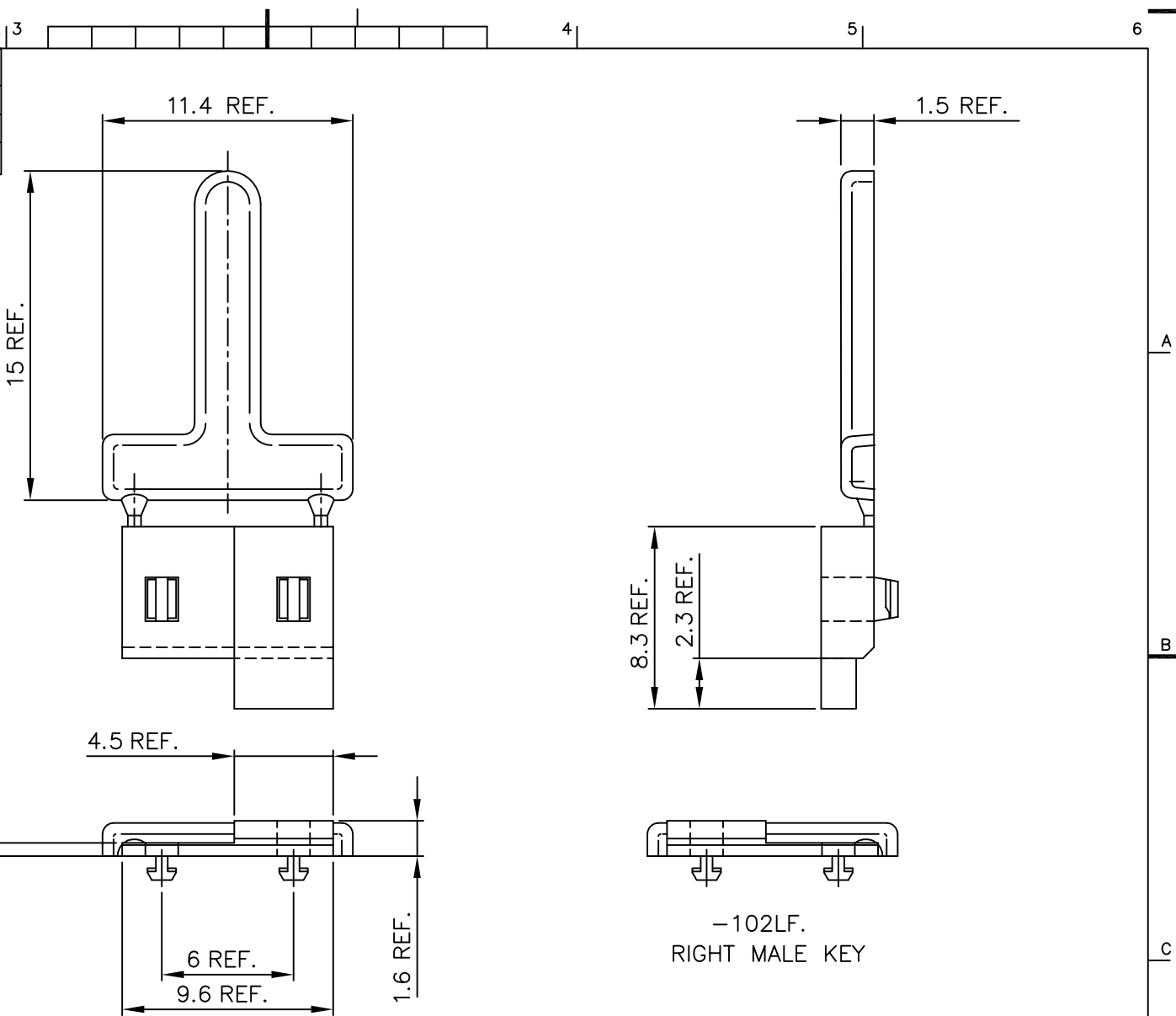


Tous droits strictement réservés. Reproduction ou communication à des tiers interdite sous quelque forme que ce soit sans autorisation écrite du propriétaire. © FCI b.v.



Reproduction or issue to third parties in any form, whatever is not permitted without written authority from the proprietor. © FCI b.v.

PRODUCT NUMBER	DESCRIPTION	COLOR
85813-101LF	LEFT MALE KEY	BLUE
85813-102LF	RIGHT MALE KEY	PINK
85813-103LF	MIDDLE MALE KEY	BROWN



-103LF
MIDDLE MALE KEY

-101LF
LEFT MALE KEY

-102LF.
RIGHT MALE KEY

NOTES:

- MATERIAL: LIQUID CRYSTAL POLYMER. FLAME RETARDANT ACC. UL 94-V0 30% GLASS FILLED, COLOR NATURAL.
- THIS PRODUCT WITH "LF" SUFFIX MEETS EUROPEAN UNION DIRECTIVES AND OTHER COUNTRY REGULATIONS AS DESCRIBED IN GS -22-008.
- THE PRODUCT IS NOT INTENDED TO BE EXPOSED TO A MANUFACTURING SOLDER PROCESS.

mat'l. code				tolerances unless otherwise specified			CUSTOMER COPY		ELECTRONICS www.fciconnect.com	
ltr	ecn no	dr	date				projection	title		
A	H40101	VWO	940211	linear				MALE KEY		
B	H40259	VWO	940420					HALF, EXTENDED		
C	H40487	DDB	940729	angles			mm	product family		code
D	H50073	RVI	950201	dr	H v Woensel	940211		CENTRAL (tm)		213
E	H50391	DAN	950705	eng	H v Woensel	940211	size		dwg no	
F	0605-0392	CLu	051017	chr	H Cooijmans	940211	scale	85813		sheet
				app	H v Woensel	940211	5:1	A3	1 of 1	
sheet index	revision	F								
	sheet	1								