

IEC Appliance Inlet C14 or C18 with Filter, Protection Degree IP65 into the Appliance, Fuseholder 1- or 2-pole, Front or Rear Mounting

Medical fuse drawer



V-Lock



5707.xxxx.x2 Mounting from front side



5707.xxxx.xxx.22 with IP 54 V-Lock cord connection



5707 with IP 54 Inlet Gasket



### Description

- Panel Mount :  
Screw-on version from front or rear side , Screws with sealing are included
- 4 Functions :  
Appliance Inlet protection class I or II , Line filter in standard and medical version , Fuseholder for fuse-links 5 x 20 mm , IP 65 protection into the appliance
- For front side mounting versions a sealing kit IP 54 for the power supply connection is available as an accessory: 4700.0021
- Option suffix ".22" offers IP 54 for the power input in combination with V-Lock cordsets
- Quick connect terminals 6.3 x 0.8 mm

### Unique Selling Proposition

- Sealed power entry module
- Strong in Design and Safety
- IP 65 protection to the appliance
- IP 54 protection to the cord connection

### Approvals

- VDE Certificate Number: 40016382
- UL File Number: E72928

### Characteristics

- Extreme robust design
- All single elements are already wired
- Screw type fuse carrier, slotted
- With EMC-shield
- Especially for applications in rough environments
- Suitable for use in equipment according to IEC/UL 60950  
Suitable for use in medical equipment according to IEC/UL 60601-1

### Other versions on request

- With solder terminals
- Class X1- and Y1-capacitors for enhanced withstand voltage
- Medical version M80
- Additional factory-mounted sealing (IP54) of power input
- Version with current rating 3 A

### Weblinks

[pdf datasheet](#), [html-datasheet](#), [General Product Information](#), [RoHS](#), [CHINA-RoHS](#), [REACH](#), [Distributor-Stock-Check](#), [Accessories](#), [Detailed request for product](#)

Newly available variants corresponding to V-Lock mating cordset. The connector is equipped with a notch intended for use with the latching cordset. The cord latching system prevents against accidental removal of the cordset.

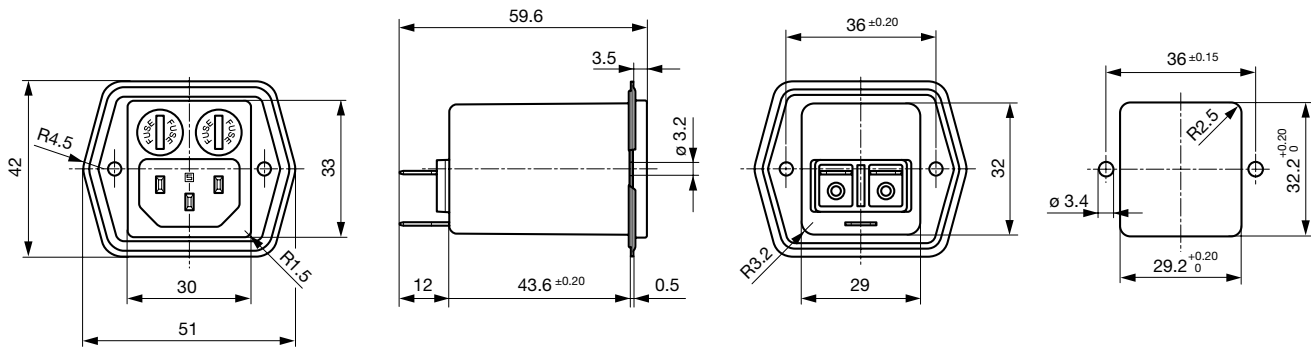
### Technical Data

|                                 |  |                                   |  |
|---------------------------------|--|-----------------------------------|--|
| Ratings IEC                     | 1 - 8A @ Ta 40 °C / 250VAC; 50Hz   | appliance inlet/-outlet           | C14 / C18 acc. to IEC 60320-1  |
| Ratings UL/CSA                  | 1 - 8A @ Ta 40 °C / 125VAC; 60Hz   |                                   | UL 498, CSA C22.2 no. 42 (for cold conditions) pin-temperature 70 °C, 8A, Protection Class I or II     |
| Leakage Current                 | standard < 0.5 mA (250 V / 60Hz)<br>medical < 5 µA (250 V / 60 Hz)                         |                                   |  |
| Dielectric Strength             | > 1.7 kVDC between L-N<br>> 2.7 kVDC between L/N-PE<br>Test voltage (2 sec)                | Fuseholder                        | 1 or 2 pole, Shocksafe category PC2 acc. to IEC 60127-6, for fuse-links 5 x 20mm                       |
| Allowable Operation Temperature | -25 °C to 85 °C  | Rated Power Acceptance @ Ta 23 °C | 5 x 20: 1.6W 1-pole/ 1,2W 2-pole per pole  |
| Climatic Category               | 25/085/21 acc. to IEC 60068-1  | Power Acceptance @ Ta > 23°C      | Admissible power acceptance at higher ambient temperature see derating curves                          |
| IP-Protection                   | from front side IP 65 acc. to IEC 60529<br>from rear-side IP 65 acc. to IEC 60529          | Line Filter                       | Standard and Medical Version, IEC 60939, UL 1283, CSA C22.2 no. 8<br><a href="#">Technical Details</a> |
| Protection Class                | Suitable for appliances with protection class I or II acc. to IEC 61140                    | MTBF                              | > 2'800'000h acc. to MIL-HB-217 F  |
| Terminal                        | Quick connect terminals 6.3 x 0.8 mm   |                                   |  |
| Panel Thickness s               | Screw, max 3mm<br>Mounting screw torque max 0.8Nm<br>2 screws M3 with sealing are provided |                                   |  |
| Material: Housing               | black / white / metallic, UL 94V-0   |                                   |  |

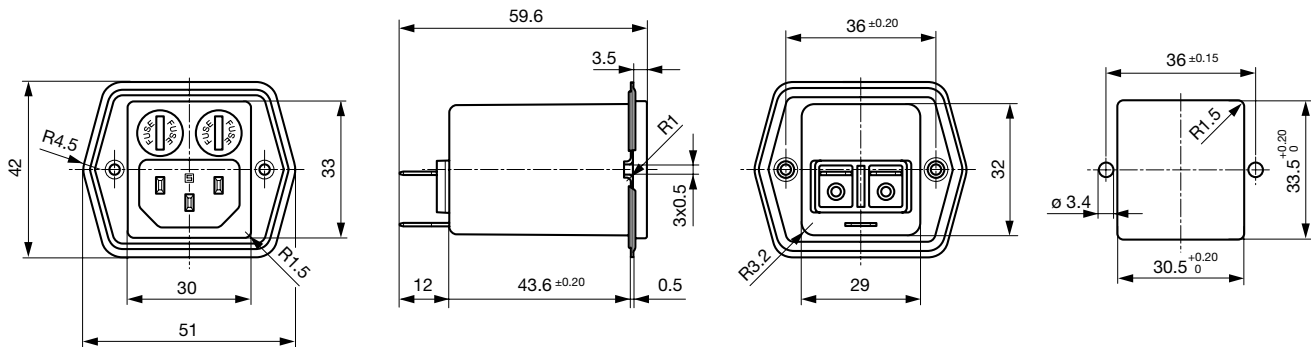
Detailed information on product approvals, code requirements, usage instructions and detailed test conditions can be looked up in [General Product Information](#)

**Dimension**

Mounting from front side



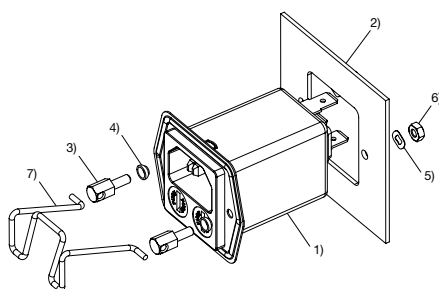
Mounting from rear side



**Assembly Instructions**

Mounting sealing kit IP 54 for the power supply (only for frontside mounting)

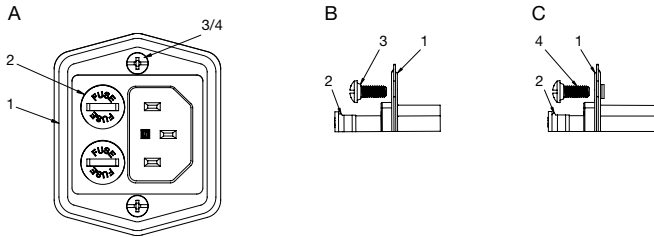
Mating cordsets to sealing kit



- 1) Power entry module with factory-mounted inlet gasket
- 2) Chassis
- 3) Pillar
- 4) Gasket ring
- 5) Crinkle washer
- 6) Nut
- 7) Retaining clip

| Part no   | Country plug   | Cable length | Cross section          | Color |
|-----------|----------------|--------------|------------------------|-------|
| 6000.0214 | open end       | 2.0 m        | 3x1 mm <sup>2</sup>    | black |
| 6003.0215 | EURO plug      | 2.5 m        | 3x1 mm <sup>2</sup>    | black |
| 6004.0215 | EURO plug      | 2.5 m        | 3x1 mm <sup>2</sup>    | black |
| 6007.0212 | EURO plug      | 1.0 m        | 3x1 mm <sup>2</sup>    | black |
| 6007.0214 | IEC plug       | 2.0 m        | 3x1 mm <sup>2</sup>    | black |
| 6004.0114 | EURO plug      | 2.0 m        | 3x0.75 mm <sup>2</sup> | black |
| 6026.0215 | Italy          | 2.5 m        | 3x1 mm <sup>2</sup>    | black |
| 6009.1315 | North America  | 2.5 m        | 3x18 AWG               | black |
| 6047.6414 | Japan          | 2.0 m        | 3x0.75 mm <sup>2</sup> | black |
| 6009.1214 | North America  | 2.0 m        | 3x18 AWG               | black |
| 6011.0215 | Switzerland    | 2.5 m        | 3x1 mm <sup>2</sup>    | black |
| 6044.0215 | United Kingdom | 2.5 m        | 3x1 mm <sup>2</sup>    | black |

Mounting standard version



- A) front view
- B) detail front mounting type
- C) detail rear mounting type

- 1) sealing of flange
- 2) sealing of fuseholder
- 3) sealing of screw hole (front mounting type: sealing ring on screw head)
- 4) sealing of screw hole (rear mounting type: sealing on screw thread)

Important:

- use supplied fuse caps (2) and mounting screws (3/4)
- optimal sealing requires even and solid panel opening
- recommended tightening torque for mounting screws (2/3/4): 0.5-0.8 Nm
- IP65 protection between the inlet and connector pins, but no IP rating between the connector pins and the plug of the power cord!

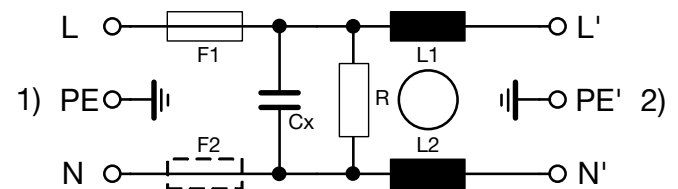
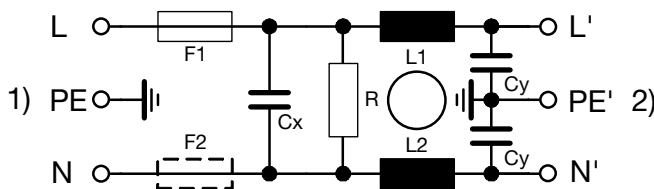
Technical Data of Filter-Components

| Rated Current [A] | Filter-Type           | Inductances L [mH] | Capacitance CX [nF] | Capacitance CY [nF] | R [MΩ] |
|-------------------|-----------------------|--------------------|---------------------|---------------------|--------|
| 1                 | Standard Version      | 2 x 12             | 100                 | 2.2                 | 1      |
| 2                 | Standard Version      | 2 x 5.2            | 100                 | 2.2                 | 1      |
| 4                 | Standard Version      | 2 x 2              | 100                 | 2.2                 | 1      |
| 6                 | Standard Version      | 2 x 0.8            | 100                 | 2.2                 | 1      |
| 8                 | Standard Version      | 2 x 0.4            | 100                 | 2.2                 | 1      |
| 1                 | Medical Version (M5)  | 2 x 12             | 100                 | -                   | 1      |
| 2                 | Medical Version (M5)  | 2 x 5.2            | 100                 | -                   | 1      |
| 4                 | Medical Version (M5)  | 2 x 2              | 100                 | -                   | 1      |
| 6                 | Medical Version (M5)  | 2 x 0.8            | 100                 | -                   | 1      |
| 8                 | Medical Version (M5)  | 2 x 0.4            | 100                 | -                   | 1      |
| 2                 | Medical Version (M80) | 2 x 5.2            | 100                 | 0.47                | 1      |

Diagrams

Standard version

Medical version M5

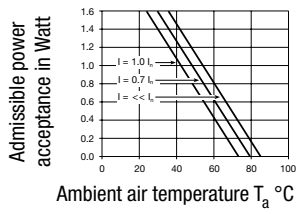


- 1) Line
- 2) Load

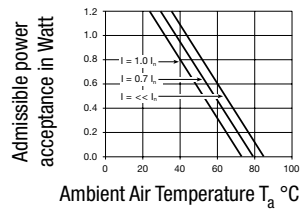
- 1) Line
- 2) Load

**Derating Curves**

1-pole



2-pole

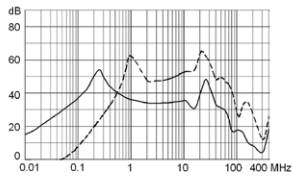


**Attenuation Loss**

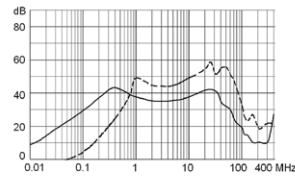
Standard version

--- 50Ω differential mode    \_\_\_\_ 50Ω common mode

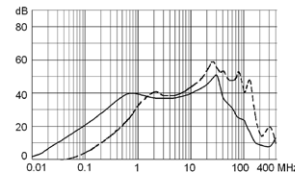
1 A



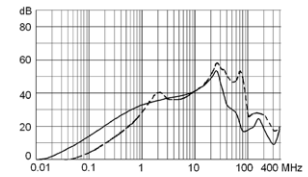
2 A



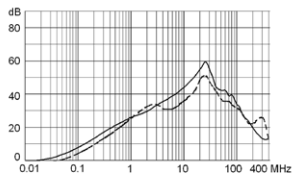
4 A



6 A

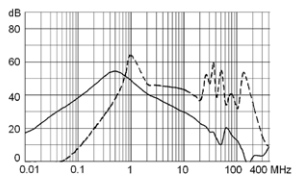


8 A

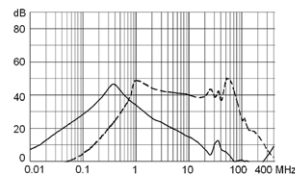


Medical version (M5)

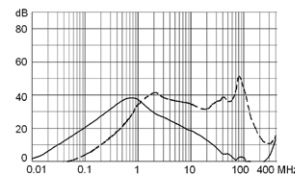
1 A



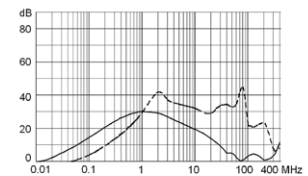
2 A



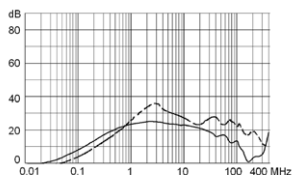
4 A



6 A



8 A



**All Variants**

| Rated Current [A] | Filter-Type      | Mounting side | Cord retaining kits | Protection Class | Power Cord IP-protection | Fuseholder | Color | V-Lock | Order Number  |
|-------------------|------------------|---------------|---------------------|------------------|--------------------------|------------|-------|--------|---------------|
| 1                 | Standard Version | Front Side    | -                   | I                | -                        | 1-pole     | black |        | 5707.0101.112 |
| 1                 | Standard Version | Rear Side     | -                   | I                | -                        | 1-pole     | black |        | 5707.0101.113 |
| 2                 | Standard Version | Front Side    | -                   | I                | -                        | 1-pole     | black |        | 5707.0201.112 |

| Rated Current [A] | Filter-Type          | Mounting side | Cord retaining kits | Protection Class | Power Cord IP-protection | Fuseholder | Color | V-Lock | Order Number     |
|-------------------|----------------------|---------------|---------------------|------------------|--------------------------|------------|-------|--------|------------------|
| 2                 | Standard Version     | Rear Side     | -                   | I                | -                        | 1-pole     | black |        | 5707.0201.113    |
| 4                 | Standard Version     | Front Side    | -                   | I                | -                        | 1-pole     | black |        | 5707.0401.112    |
| 4                 | Standard Version     | Rear Side     | -                   | I                | -                        | 1-pole     | black |        | 5707.0401.113    |
| 6                 | Standard Version     | Front Side    | -                   | I                | -                        | 1-pole     | black |        | 5707.0601.112    |
| 6                 | Standard Version     | Rear Side     | -                   | I                | -                        | 1-pole     | black |        | 5707.0601.113    |
| 8                 | Standard Version     | Front Side    | -                   | I                | -                        | 1-pole     | black |        | 5707.0801.112    |
| 8                 | Standard Version     | Rear Side     | -                   | I                | -                        | 1-pole     | black |        | 5707.0801.113    |
| 1                 | Standard Version     | Front Side    | -                   | I                | -                        | 2-pole     | black |        | 5707.0101.312    |
| 1                 | Standard Version     | Rear Side     | -                   | I                | -                        | 2-pole     | black |        | 5707.0101.313    |
| 2                 | Standard Version     | Front Side    | -                   | I                | -                        | 2-pole     | black |        | 5707.0201.312    |
| 2                 | Standard Version     | Rear Side     | -                   | I                | -                        | 2-pole     | black |        | 5707.0201.313    |
| 4                 | Standard Version     | Front Side    | -                   | I                | -                        | 2-pole     | black |        | 5707.0401.312    |
| 4                 | Standard Version     | Rear Side     | -                   | I                | -                        | 2-pole     | black |        | 5707.0401.313    |
| 4                 | Standard Version     | Rear Side     | -                   | I                | IP 54                    | 2-pole     | black | ●      | 5707.0401.313.22 |
| 6                 | Standard Version     | Front Side    | -                   | I                | -                        | 2-pole     | black |        | 5707.0601.312    |
| 6                 | Standard Version     | Rear Side     | -                   | I                | -                        | 2-pole     | black |        | 5707.0601.313    |
| 8                 | Standard Version     | Front Side    | -                   | I                | -                        | 2-pole     | black |        | 5707.0801.312    |
| 8                 | Standard Version     | Front Side    | -                   | I                | IP 54                    | 2-pole     | black |        | 5707.0801.312.01 |
| 8                 | Standard Version     | Rear Side     | -                   | I                | -                        | 2-pole     | black |        | 5707.0801.313    |
| 8                 | Standard Version     | Rear Side     | -                   | I                | -                        | 2-pole     | black | ●      | 5707.0801.313.21 |
| 1                 | Medical Version (M5) | Front Side    | -                   | I                | -                        | 2-pole     | black |        | 5707.0103.312    |
| 1                 | Medical Version (M5) | Rear Side     | -                   | I                | -                        | 2-pole     | black |        | 5707.0103.313    |
| 1                 | Medical Version (M5) | Rear Side     | -                   | I                | -                        | 2-pole     | black | ●      | 5707.0103.313.21 |
| 2                 | Medical Version (M5) | Front Side    | -                   | I                | -                        | 2-pole     | black |        | 5707.0203.312    |
| 2                 | Medical Version (M5) | Rear Side     | -                   | I                | -                        | 2-pole     | black |        | 5707.0203.313    |
| 2                 | Medical Version (M5) | Rear Side     | -                   | I                | -                        | 2-pole     | black | ●      | 5707.0203.313.21 |
| 4                 | Medical Version (M5) | Rear Side     | -                   | I                | IP 54                    | 2-pole     | black | ●      | 3-100-897        |
| 4                 | Medical Version (M5) | Front Side    | -                   | I                | -                        | 2-pole     | black |        | 5707.0403.312    |
| 4                 | Medical Version (M5) | Rear Side     | -                   | I                | -                        | 2-pole     | black |        | 5707.0403.313    |
| 4                 | Medical Version (M5) | Rear Side     | -                   | I                | -                        | 2-pole     | black | ●      | 5707.0403.313.21 |
| 6                 | Medical Version (M5) | Front Side    | -                   | I                | -                        | 2-pole     | black |        | 5707.0603.312    |
| 6                 | Medical Version (M5) | Rear Side     | -                   | I                | -                        | 2-pole     | black |        | 5707.0603.313    |
| 6                 | Medical Version (M5) | Rear Side     | -                   | I                | -                        | 2-pole     | black | ●      | 5707.0603.313.21 |
| 6                 | Medical Version (M5) | Front Side    | -                   | I                | -                        | 2-pole     | white |        | 5707.0613.312    |
| 6                 | Medical Version (M5) | Front Side    | -                   | I                | -                        | 2-pole     | white | ●      | 5707.0613.312.21 |
| 6                 | Medical Version (M5) | Rear Side     | -                   | I                | -                        | 2-pole     | white |        | 5707.0613.313    |
| 6                 | Medical Version (M5) | Rear Side     | -                   | I                | -                        | 2-pole     | white | ●      | 5707.0613.313.21 |
| 8                 | Medical Version (M5) | Front Side    | -                   | I                | -                        | 2-pole     | black |        | 5707.0803.312    |
| 8                 | Medical Version (M5) | Front Side    | -                   | I                | IP 54                    | 2-pole     | black | ●      | 5707.0803.312.22 |
| 8                 | Medical Version (M5) | Rear Side     | -                   | I                | -                        | 2-pole     | black |        | 5707.0803.313    |
| 8                 | Medical Version (M5) | Rear Side     | -                   | I                | -                        | 2-pole     | black | ●      | 5707.0803.313.21 |
| 1                 | Medical Version (M5) | Front Side    | -                   | II               | -                        | 2-pole     | black |        | 5707.0103.412    |
| 1                 | Medical Version (M5) | Rear Side     | -                   | II               | -                        | 2-pole     | black |        | 5707.0103.413    |
| 2                 | Medical Version (M5) | Front Side    | -                   | II               | -                        | 2-pole     | black |        | 5707.0203.412    |
| 2                 | Medical Version (M5) | Rear Side     | -                   | II               | -                        | 2-pole     | black |        | 5707.0203.413    |
| 4                 | Medical Version (M5) | Front Side    | -                   | II               | -                        | 2-pole     | black |        | 5707.0403.412    |
| 4                 | Medical Version (M5) | Rear Side     | -                   | II               | -                        | 2-pole     | black |        | 5707.0403.413    |

| Rated Current [A] | Filter-Type           | Mounting side | Cord retaining kits | Protection Class | Power Cord IP-protection | Fuseholder | Color | V-Lock | Order Number     |
|-------------------|-----------------------|---------------|---------------------|------------------|--------------------------|------------|-------|--------|------------------|
| 6                 | Medical Version (M5)  | Front Side    | -                   | II               | -                        | 2-pole     | black |        | 5707.0603.412    |
| 6                 | Medical Version (M5)  | Rear Side     | -                   | II               | -                        | 2-pole     | black |        | 5707.0603.413    |
| 8                 | Medical Version (M5)  | Front Side    | -                   | II               | -                        | 2-pole     | black |        | 5707.0803.412    |
| 8                 | Medical Version (M5)  | Rear Side     | -                   | II               | -                        | 2-pole     | black |        | 5707.0803.413    |
| 2                 | Medical Version (M80) | Front Side    | -                   | I                | IP 54                    | 2-pole     | black |        | 5707.0205.312.01 |

Most Popular.

Availability for all products can be searched real-time: <http://www.schurter.com/en/Stock-Check/Stock-Check-SCHURTER>

**Packaging unit** 10 Pcs

## Accessories

### Description



**Wire Harness**  
Wire harness for SCHURTER products



**Assorted Covers**  
Rear Cover

0859.0047

## Mating Outlets/Connectors

### Category / Description

#### Connector Overview complete



|  |         |
|--|---------|
| 4782 Mounting: Power Cord, 3 x 1 mm <sup>2</sup> / 3 x 18 AWG, Cable, Connector: IEC C13     | 4782    |
| 4022 Mounting: Power Supply Cord, 3 x 1.5 mm <sup>2</sup> , Screw clamps, Connector: IEC C13 | 4022    |
| 4785 Mounting: Power Cord, 3 x 1 mm <sup>2</sup> / 3 x 18 AWG, Cable, Connector: IEC C13     | 4785    |
| 4300-06 Mounting: Power Cord, 3 x 1 mm <sup>2</sup> / 3 x 18 AWG, Cable, Connector: IEC C13  | 4300-06 |
| 4012 Mounting: Power Supply Cord, 3 x 1.5 mm <sup>2</sup> , Screw clamps, Connector: IEC C13 | 4012    |
| <a href="#">Connector further types to 5707</a>  | ...     |

#### Interconnection Cord Overview complete



|  |           |
|--|-----------|
| Cord Sets 10 A, Interconnection, 2.0 m, IEC H05VV-F3G1.0, black                | 6007.0204 |
| Cord Sets 10 A, Interconnection, 1.0 m, Connector IEC C13, H05VV-F3G1.0, black | 6007.0212 |
| Cord Sets 10 A, Interconnection, 2.0 m, Connector IEC C13, H05VV-F3G1.0, black | 6007.0214 |

[Interconnection Cord further types to 5707](#)

Category / Description

[Power Supply Cord Overview complete](#)



|  |           |
|--|-----------|
| Cord Sets 10 A, Europlug, 2.5 m, Connector IEC C13, H05VV-F3G1.0, black          | 6004.0215 |
| Cord Sets 10 A, Europlug, 2.5 m, Connector IEC C13, H05VV-F3G1.0, black          | 6003.0215 |
| Cord Sets 10 A, uninsulated wires, 2.0 m, Connector IEC C13, H05VV-F3G1.0, black | 6000.0224 |
| Cord Sets 10 A, uninsulated wires, 2.0 m, Connector IEC C13, H05VV-F3G1.0, black | 6000.0214 |
| Cord Sets 10 A, United Kingdom, 2.5 m, Connector IEC C13, H05VV-F3G1.0, black    | 6044.0215 |
| <a href="#">Power Supply Cord further types to 5707</a>                          | ...       |

[Power Supply or Interconnection Cord Overview complete](#)



|  |           |
|--|-----------|
| Cord Sets 10 A, United Kingdom, 2.0 m, Connector IEC H05VV-F3G1.0, black   | 6044.0204 |
| <a href="#">Power Supply or Interconnection Cord further types to 5707</a> |           |

Mating Outlets/Connectors shuttered

[Power Cord Overview complete](#)



|   |           |
|---|-----------|
| VAC17KS, North America, V-Lock cord retaining, 3.0 m, Connector C17, SJT 2x18 AWG, black    | 3-101-794 |
| VAC17KS, North America, V-Lock cord retaining, 2.0 m, Connector C17, SJT 2x18 AWG, black    | 6051.2801 |
| VAC17KS, North America, V-Lock cord retaining, 2.0 m, Connector C17, SJT 2x18 AWG, white    | 6051.2811 |
| VAC17KS, United Kingdom, V-Lock cord retaining, 2.0 m, Connector IEC C17, H05VV-F2G1, black | 3-101-184 |
| VAC17KS, Switzerland, V-Lock cord retaining, 2.0 m, Connector IEC C17, H05VV-F2G1, black    | 3-101-185 |
| <a href="#">Power Cord further types to 5707</a>  | ...       |